

Aksak semal

$\text{♩} = 100$

BESTENİGAR SAZ SEMAİSİ

Müzik: Aladdin

PAKYÜZ:

1. HANE



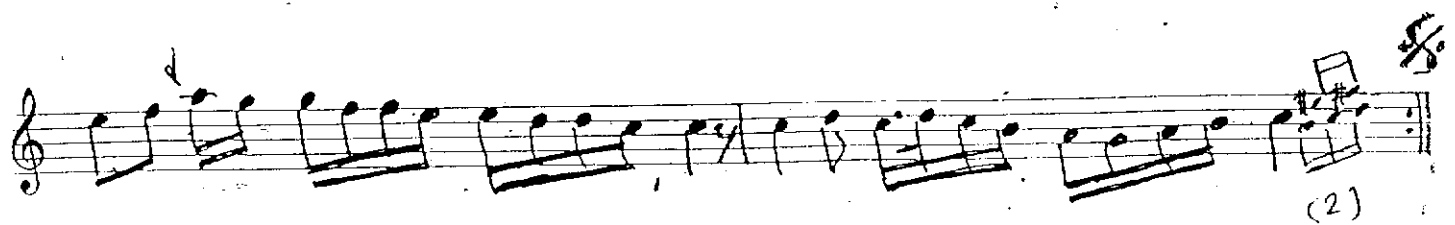
5. TESLİM



2. HANE



3. HANE



Curcuna  $\text{♩} = 200$

4. HANE

A handwritten musical score for a piece titled "Curcuna" with a tempo marking of  $\text{♩} = 200$ . The score is written on six staves of five-line music paper, using a treble clef and a key signature of one sharp (F#). The notation includes various musical symbols such as notes, rests, accidentals, and dynamic markings. The first staff begins with a repeat sign and a first ending bracket. The second staff contains a measure with a double bar line and a repeat sign. The third staff features a measure with a double bar line and a repeat sign. The fourth staff ends with a double bar line and a repeat sign. The fifth staff begins with a double bar line and a repeat sign. The sixth staff concludes with a double bar line and a repeat sign, followed by a final cadence symbol. There are some handwritten annotations, including a "d" above a note in the fifth staff and a "(1)" below a note in the sixth staff. A small box with the number "2" is also present near the end of the sixth staff.